

# BAYLAN

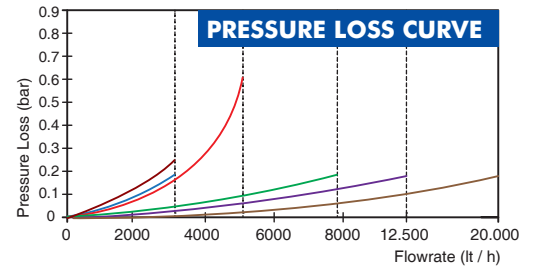
## WATER METERS

# AK-411 RF / LoRa Remote Reading Ultrasonic Water Meters



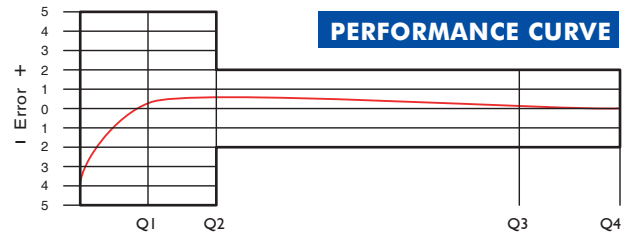
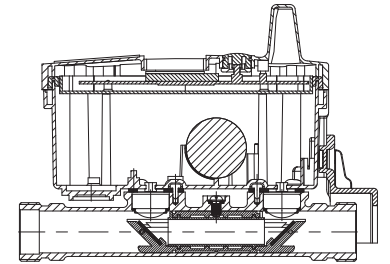
### GENERAL

- MID Certificated • RF Readings
- Supports Wireless MBUS Protocol
- Integrated Lora module-chipset allows both LORA and FSK modulation
- Supports LoRaWAN™ and Wireless MBUS Protocols simultaneously (Optional)
- Supports LoRaWAN™ - Class A Protocol • Built-in buzzer
- Selectable Frequency Band EU 863-870 Mhz
- Ultrasonic principle assures very high sensitivity even at low flow
- 3.6V Lithium battery replaced by local administration
- LCD display with back light • Advanced service network
- Suitable for cold water up to 50°C • Suitable for potable water
- No measurement of air • Reverse flow detection
- Wide dynamic measuring range and low pressure loss
- Solid stainless steel reflector • IP 68 protection class
- Can be mounted all positions desired
- Leakage control system, • 3 years of warranty
- Service and spare parts available for 10 years



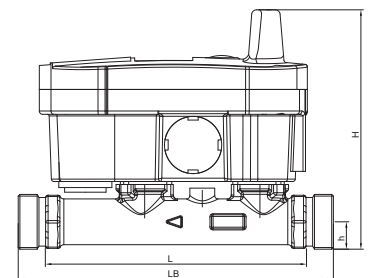
### PERFORMANCE DATA

Nominal Diameter	DN	15	20	25	32	40
Overload Flowrate Q4	m <sup>3</sup> /h	3,125	3,125	5	7,875	20
Permanent Flowrate Q3	m <sup>3</sup> /h	2,5	2,5	4	6,3	16
Transitional Flowrate Q2	m <sup>3</sup> /h	0,010	0,010	0,016	0,0252	0,040
Minimum Flowrate Q1	m <sup>3</sup> /h	0,0062	0,0062	0,010	0,0158	0,025
Q3/Q1 (MI-001 OIML R49)	-	≤400	≤400	≤400	≤400	≤400
Pressure Loss	bar	0,16	0,25	0,63	0,16	0,16
Accuracy Class	-	2	1/2	2	2	1/2
Mounting on the network	-	All Positions				
Maximum Registration Capacity	m <sup>3</sup>	999999				
Initial Flow Qi	l/h	3				
Maximum Working Pressure	bar	16				
Maximum Working Temperature	°C	50				
Smallest Reading Resolution	m <sup>3</sup>	0,00001				
Quantity per package	-	5				



### DIMENSIONS

Nominal diameter	DN	15	20	25	32	40	mm
Connecting diameter	D	G 3/4	G 1	G 1 1/4	G 1 1/2	G 2	B
Total overall meter height	H	147	147	153	161	170	mm
Axis height	h	19	19	21,9	24,9	32	mm
Width	B	91	91	91	91	91	mm
Length	L	190	190	225	230	200	mm
Length with connections	LB	270	270	345	360	330	mm
LCD Screen Length		55x30	55x30	55x30	55x30	55x30	mm
LCD Screen Angle		30°	30°	30°	30°	30°	mm
Unit weight		1,30	1,30	1,50	1,90	1,85	kg
Package Weight (without connec.)		7,30	7,45	8,42	10,5	9,25	kg
Package Weight (with connec.)		8,00	8,42	10,62	13,9	14,2	kg
Package dimensions		17x52x23	17x52x23	26x52x30	26x52x30	26x52x30	cm



"Due to continuous development of our products, we reserve the right to modify our product design or construction without prior notice."