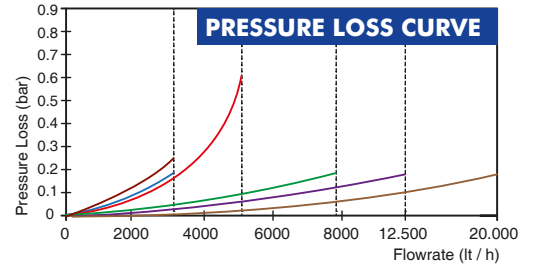


BAYLAN

WATER METERS

AK-411 Sigfox Remote Reading Ultrasonic Water Meters



GENERAL

- MID Certificated
- Remote management with Sigfox technology
- Sigfox RC1 Frequency band support
- Segment or Graphic LCD, backlit display option
- Ultrasonic principle assures very high sensitivity even at low flow
- Battery life up to 10 years
- Suitable for cold water up to 50°C
- Suitable for potable water
- No measurement of air • Reverse flow detection
- Wide dynamic measuring range and low pressure loss
- Solid stainless steel reflector • IP 68 protection class
- Can be mounted all positions desired
- Leakage control system, • 3 years of warranty
- Service and spare parts available for 10 years
- Environmental Classes

Climatic : -25°C/+60°C | Mechanic: M1/O | Elektromagnetic: E2

- $Q2 \leq Q \leq Q4$ Maximum Permissible Error

Class 2 Water Meters; $\% \pm 2$ (Water Temp. $\leq 30^\circ\text{C}$), $\% \pm 3$ (Water Temp. $> 30^\circ\text{C}$)

Class 1 Water Meters; $\% \pm 1$ (Water Temp. $\leq 30^\circ\text{C}$), $\% \pm 2$ (Water Temp. $> 30^\circ\text{C}$)

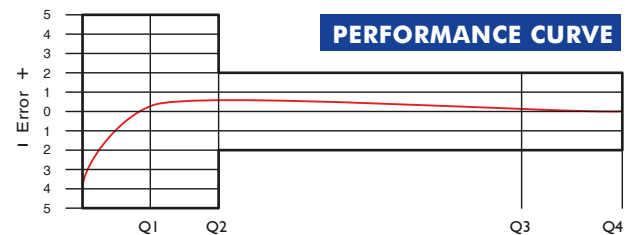
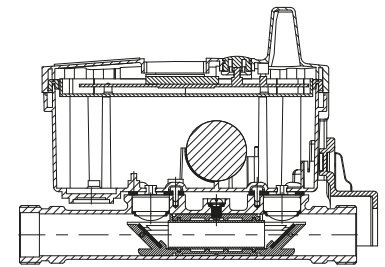
- $Q1 \leq Q < Q2$ Maximum Permissible Error

Class 2 Water Meters; $\% \pm 5$ | Class 1 Water Meters; $\% \pm 3$



PERFORMANCE DATA

Nominal Diameter	DN	15	20	25	32	40
Overload Flowrate Q4	m ³ /h	3,125	3,125	5	7,875	12,5
Permanent Flowrate Q3	m ³ /h	2,5	2,5	4	6,3	10
Transitional Flowrate Q2	m ³ /h	0,010	0,010	0,016	0,0252	0,040
Minimum Flowrate Q1	m ³ /h	0,0062	0,0062	0,010	0,0158	0,025
Q3/Q1 (MI-001 OIML R49)	-	≤ 400	≤ 400	≤ 400	≤ 400	≤ 400
Pressure Loss Class	bar	0,16	0,25	0,63	0,16	0,16
Mounting on the network	-	All Positions				
Maximum Registration Capacity	m ³	999999				
Initial Flow Qi	l/h	3				
Maximum Working Pressure	bar	16				
Maximum Working Temperature	°C	50				
Smallest Reading Resolution	m ³	0,00001				
Accuracy Class	-	Class 1/Class 2				
Quantity per package	-	5				



DIMENSIONS

Nominal diameter	DN	15	20	25	32	40	mm
Connecting diameter	D	G 3/4	G 1	G 1 1/4	G 1 1/2	G 2	B
Total overall meter height	H	147	147	153	161	170	mm
Axis height	h	19	19	21,9	24,9	32	mm
Width	B	91	91	91	91	91	mm
Length	L	190	190	225	230/260	200	mm
Length with connections	LB	270	270	345	360/390	330	mm
LCD Screen Length		55x30	55x30	55x30	55x30	55x30	mm
LCD Screen Angle		30°	30°	30°	30°	30°	mm
Unit weight		1,18	1,20	1,4/1,7	1,5/1,9	1,2/1,7	kg
Package Weight (without connec.)		6,75	6,85	8,42	9,00	7,90	kg
Package Weight (with connec.)		7,55	7,80	10,62	12,40	12,85	kg
Package dimensions		17x52x23	17x52x23	26x52x30	26x52x30	26x52x30	cm

