

BAYLAN

WATER METERS

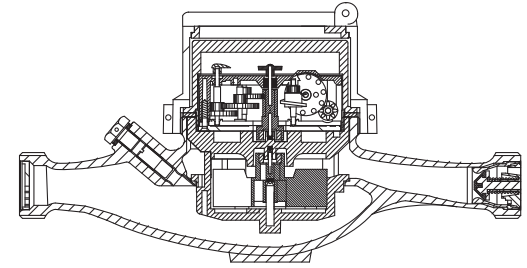
TK-12

Multi jet Dry type Water Meter



GENERAL

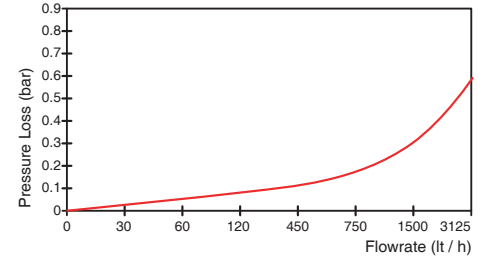
- MID Certified
- Multi jet working principle assures a long service time
- Low pressure loss, high sensitivity at initial flow
- Suitable for potable water
- 360° rotating lid
- Available for optical reading
- 3 years of warranty • Non return valve
- Suitable for cold water up to 50°C
- Electrostatic painted body made of corrosion resistant brass
- Protection against external magnetic fields
- Almost no maintenance
- Service and spare parts available for 10 years



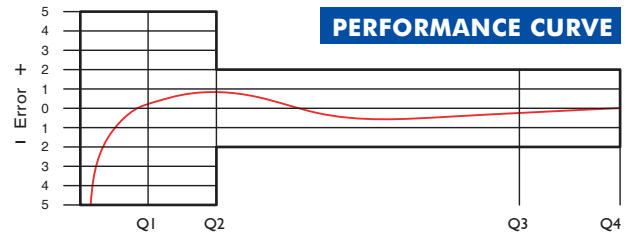
PERFORMANCE DATA

Overload Flowrate	Q4	m ³ /h	3,125
Permanent Flowrate	Q3	m ³ /h	2,5
Transitional Flowrate	Q2	m ³ /h	0,025
Minimum Flowrate	Q1	m ³ /h	0,0156
Q3/Q1 (MI-001 OIML R49)			≤160
Mounting on the network			Horizontal
Maximum Registration Capacity			99999 / 999999 / 99999,99 / 99999,999
Initial Flowrate	Qi	l/h	7
Maximum Working Pressure		bar	16
Maximum Working Temperature		°C	50
Pressure Loss		bar	0,63
Smallest Reading Resolution		m ³	0,00005
Class			Class 1 / Class 2
Quantity per package			10

PRESSURE LOSS CURVE

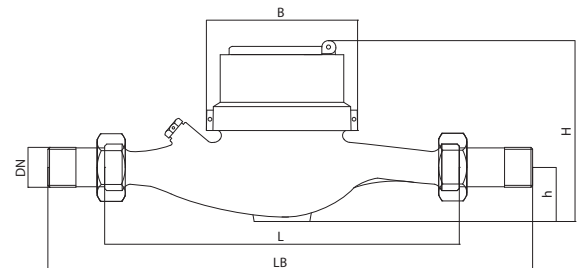


PERFORMANCE CURVE



DIMENSIONS

Nominal diameter	DN	15	20	mm				
Connecting diameter	D	G 3/4	G 1	B				
Total overall meter height	H	94,4	91,6	93,5	mm			
Axis height	h	29	28	mm				
Width	B	80	80	mm				
Length	L	165	170	190	165	170	190	mm
Length with connections	LB	245	250	270	245	250	270	mm
Unit weight		0,84	0,85	kg				
Package Weight (without connect)		9,20	9,30	kg				
Package Weight (with connect)		10,80	11,20	kg				
Package dimensions		24x46x23	24x46x23	cm				



"Due to continuous development of our products, we reserve the right to modify our product design or construction without prior notice."