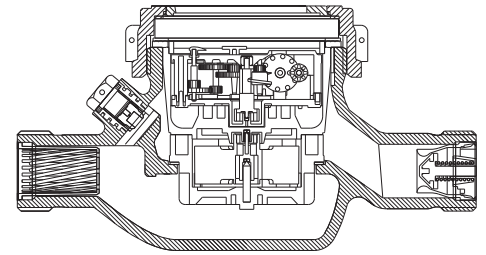


# BAYLAN

## WATER METERS

### TK-1P

## Multi jet Dry type Water Meter



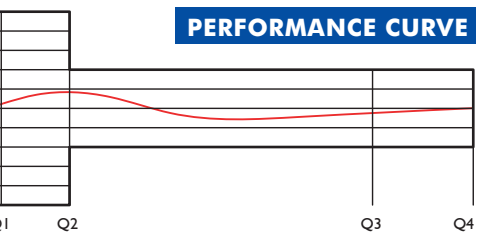
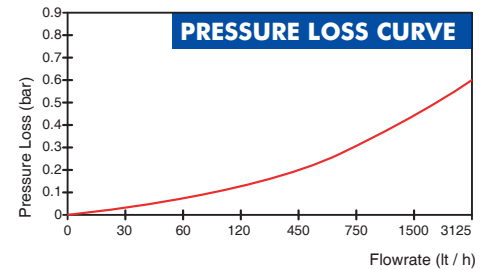
#### GENERAL

- MID Certified
- Multi jet working principle assures a long service time
- Low pressure loss, high sensitivity at initial flow
- Special glass with high resistance to pressure and impact
- Composite body with high resistance to pressure and impacts
- Protection against external magnetic fields
- Available for optical reading
- Pulse output and AMR reading features are optional
- 3 years of warranty • 360° rotating lid
- Non return valve • Suitable for potable water
- Suitable for cold water up to 50°C • Almost no maintenance
- Service and spare parts available for 10 years
- Stainless steel register cup is optional
- Also available without brass inserts
- Brass or composite end connection options



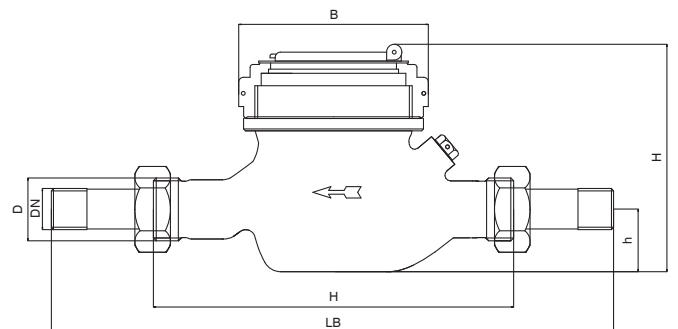
#### PERFORMANCE DATA

|                               |                |                   |                                     |
|-------------------------------|----------------|-------------------|-------------------------------------|
| Overload Flowrate             | Q4             | m <sup>3</sup> /h | 3,125                               |
| Permanent Flowrate            | Q3             | m <sup>3</sup> /h | 2,5                                 |
| Transitional Flowrate         | Q2             | m <sup>3</sup> /h | 0,020                               |
| Minimum Flowrate              | Q1             | m <sup>3</sup> /h | 0,0125                              |
| Q3/Q1 (MI-001 OIML R49)       |                |                   | ≤200                                |
| Mounting on the network       |                |                   | Horizontal                          |
| Maximum Registration Capacity |                |                   | 9999 / 99999 / 99999,99 / 99999,999 |
| Initial Flowrate              | Qi             | l/h               | 6                                   |
| Maximum Working Pressure      | bar            |                   | 16                                  |
| Maximum Working Temperature   | °C             |                   | 50                                  |
| Pressure Loss                 | bar            |                   | 0,63                                |
| Smallest Reading Resolution   | m <sup>3</sup> |                   | 0,00005                             |
| Class                         |                |                   | Class 1 / Class 2                   |
| Quantity per package          |                |                   | 10                                  |



#### DIMENSIONS

|                                  |    |          |    |
|----------------------------------|----|----------|----|
| Nominal diameter                 | DN | 20       | mm |
| Connecting diameter              | D  | G 1      | B  |
| Total overall meter height       | H  | 119,6    | mm |
| Axis height                      | h  | 37,4     | mm |
| Length                           | L  | 190      | mm |
| Width                            | B  | 101      | mm |
| Length with connections          | LB | 270      | mm |
| Unit weight                      |    | 0,83     | kg |
| Package Weight (without connect) |    | 9,04     | kg |
| Package Weight (with connect)    |    | 10,94    | kg |
| Package dimensions               |    | 27x52x22 | cm |



"Due to continuous development of our products, we reserve the right to modify our product design or construction without prior notice."