

BAYLAN

WATER METERS

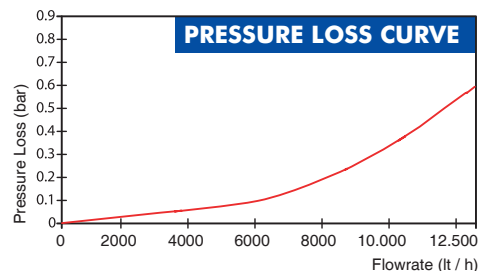
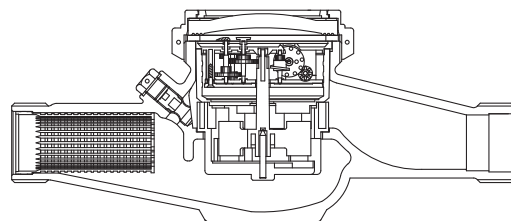
TY-26

Multi jet Wet type Water Meter



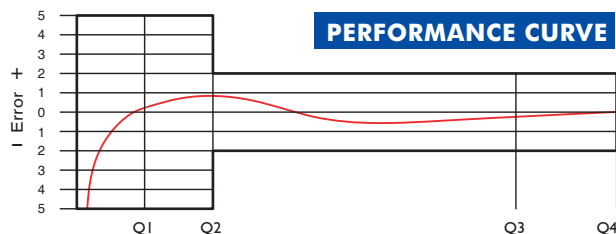
GENERAL

- MID Certified
- Multi jet working principle assures a long service time
- Available for optical reading
- Electrostatic painted body made of corrosion resistant brass
- Pulse output optional
- Suitable for potable water
- Non return valve
- Low pressure loss, high sensitivity at initial flow
- Special glass with high resistance to pressure and impact
- 360° rotating lid • Double filter
- Suitable for cold water up to 50°C
- Almost no maintenance • 3 years of warranty
- Service and spare parts available for 10 years



PERFORMANCE DATA

Overload Flowrate	Q4	m ³ /h	12,5					
Permanent Flowrate	Q3	m ³ /h	10					
Transitional Flowrate	Q2	m ³ /h	0,100	0,08	0,064	0,64	0,40	0,2
Minimum Flowrate	Q1	m ³ /h	0,0625	0,05	0,04	0,4	0,25	0,125
Q3/Q1 (MI-001 OIML R49)	-		160	200	250	25	40	80
Mounting on the network	-		H			V		
Maximum Registration Capacity	m ³	9999 / 99999 / 99999,99 / 99999,999						
Maximum Working Pressure	bar	16						
Maximum Working Temperature	°C	50						
Pressure Loss	bar	0,6						
Initial Flow	Qi	l/h	15					
Smallest Reading Resolution	m ³	0,00005						
Class	-	Class 1/Class 2						
Unit weight	kg	2,28						
Package Weight (without connect)	kg	23,99						
Package Weight (with connect)	kg	30,79						
Quantity per package	-	10						
Package dimensions	cm	26,5x52x30,5						



DIMENSIONS

Nominal diameter	DN	32	mm
Connecting diameter	D	G1 1/2	B
Total overall meter height	H	122	mm
Axis height	h	47	mm
Width	B	95	mm
Length	L	260	mm
Length with connections	LB	385	mm

