

# BAYLAN

## WATER METERS

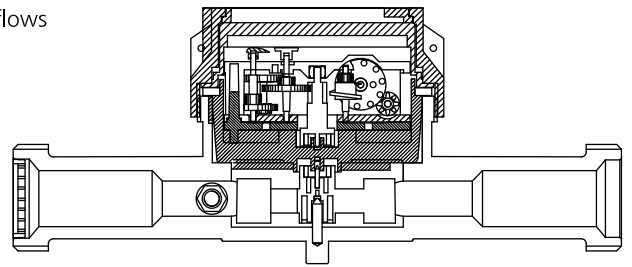
### KK-6

## Single jet Dry type Water Meter



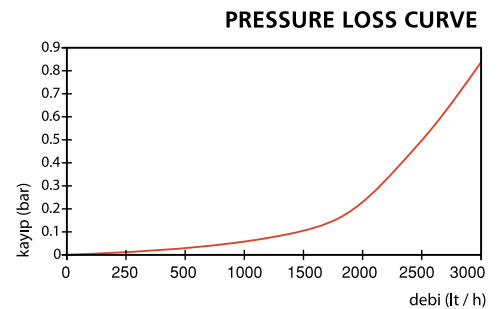
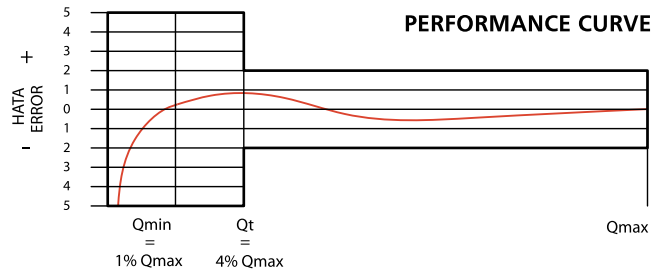
#### GENERAL

- Single jet design assures very high sensitivity even at low flows
- 360° rotating lid
- Plastic body with high resistance to pressure and impacts
- Available for optical reading
- 3 years of warranty
- Suitable for cold water up to 50°C
- Almost no maintenance
- Service and spare parts available for 10 years



#### PERFORMANCE DATA

Nominal Flow	Qn	(m <sup>3</sup> /h)	: 1.5
Maximum Flow	Qmax	(m <sup>3</sup> /h)	: 3.0
Transitional Flow	Qt	(m <sup>3</sup> /h)	: 0.12
Minimum Flow	Qmin	(m <sup>3</sup> /h)	: 0.03
Initial Flow	Qi	(l/h)	: 7
Maximum Working Pressure		(bar)	: 16
Maximum Working Temperature		(°C)	: 50
Metrological Class			: B
Pressure Loss		(bar)	: 1
Maximum Registration Capacity		(m <sup>3</sup> )	: 9999
Smallest Reading Resolution		(m <sup>3</sup> )	: 0.00005
Mounting on the network			: Horizontal
Unit weight		(kg)	: 0.43
Package Weight (without connections)		(kg)	: 4.6
Package Weight (with connections)		(kg)	: 6.8
Quantity per package			: 10
Package dimensions		(cm)	: 20x41.5x21



#### DIMENSIONS

Nominal diameter	DN	20	mm
Connecting diameter	D	G 1	B
Total overall meter height	H	87	mm
Axis height	h	20	mm
Length	L	190	mm
Width	B	85	mm
Length with connections	LB	285	mm

