

BAYLAN

WATER METERS

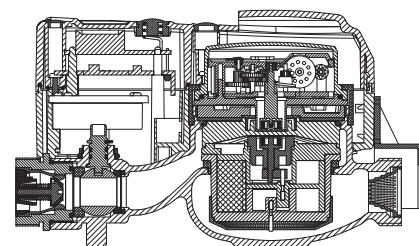
AK-311V

Remote Reading and Prepaid Water Meters



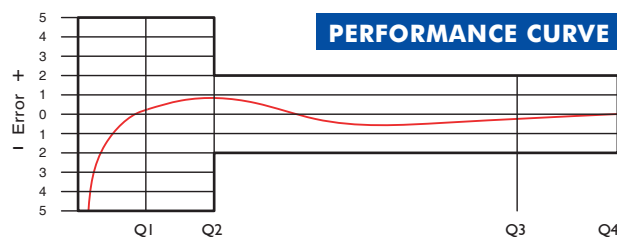
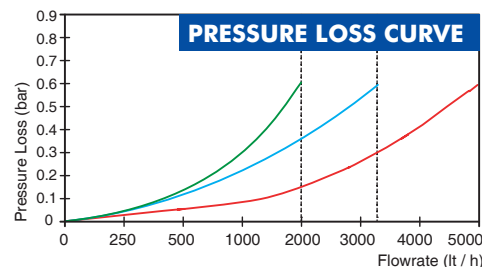
GENERAL

- MID Certified • Radio Frequency automatic remote reading
 - Reading through the center of the GPRS system, the collector of conformity
 - Contactless card usage ensures isolation against external effects
 - Setting up different tariffs • Suitable for potable water • IP68 protected electronic circuit and mechanical meter
 - Check valve disabling bidirectional water flow • Fitting security cover and electronic sensor
 - Battery life up to 10 years • All spare parts available, wide range of service network
 - LCD display with backlight • Suitable for cold water up to 50°C
 - Leakage control system, 3 years of warranty
 - Environmental Classes
- Climatic : -10°C/+55°C | Mechanic: M1/O | Elektromagnetic: E2
- $Q2 \leq Q \leq Q4$ Maximum Permissible Error
 - Class 2 Water Meters; $\% \pm 2$ (Water Temp. $\leq 30^\circ\text{C}$), $\% \pm 3$ (Water Temp. $> 30^\circ\text{C}$)
 - Class 1 Water Meters; $\% \pm 1$ (Water Temp. $\leq 30^\circ\text{C}$), $\% \pm 2$ (Water Temp. $> 30^\circ\text{C}$)
 - $Q1 \leq Q < Q2$ Maximum Permissible Error
 - Class 2 Water Meters; $\% \pm 5$ | Class 1 Water Meters; $\% \pm 3$



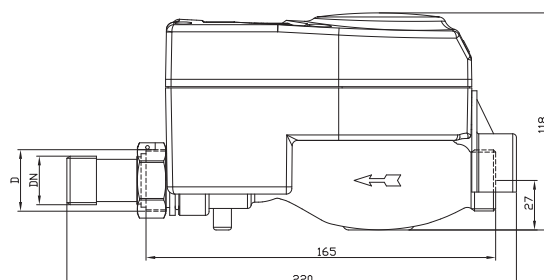
PERFORMANCE DATA

Overload Flowrate	Q4	m ³ /h	2.0
Permanent Flowrate	Q3	m ³ /h	1.6
Transitional Flowrate	Q2	m ³ /h	0.00512
Minimum Flowrate	Q1	m ³ /h	0.0032
Overload Flowrate	Q4	m ³ /h	3.125
Permanent Flowrate	Q3	m ³ /h	2.500
Transitional Flowrate	Q2	m ³ /h	0.008
Minimum Flowrate	Q1	m ³ /h	0.005
Overload Flowrate	Q4	m ³ /h	5
Permanent Flowrate	Q3	m ³ /h	4
Transitional Flowrate	Q2	m ³ /h	0.0128
Minimum Flowrate	Q1	m ³ /h	0.008
Q3/Q1 (MI-001 OIML R49)	-		≤ 500
Maximum Registration Capacity	m ³		9999/99999/99999,99/99999,999
Mounting on the network	-		All Positions
Initial Flow	Qi	l/h	1
Maximum Working Pressure	bar		16
Maximum Working Temperature	°C		50
Pressure Loss Class	bar		0,63
Smallest Reading Resolution	m ³		0.00005
Class	-		Class 1 / Class 2



DIMENSIONS

Nominal diameter	DN	15	20	mm
Connecting diameter	D	G 3/4	G 1	B
Total overall meter height	H	118	118	mm
Axis height	h	27,5	27	mm
Width	B	100	100	mm
Length	L	190	190	mm
Length with connections	LB	270	270	mm
LCD Screen Length		64x20	64x20	mm
LCD Screen Angle		30°	30°	mm
Unit weight		1.64	1.64	kg
Package Weight (without connections)		8.94	8.94	kg
Package Weight (with connections)		9.74	9.99	kg
Quantity per package		5	5	pcs
Package dimensions		16x54x23	16x54x23	cm



"Due to continuous development of our products, we reserve the right to modify our product design or construction without prior notice."