

# BAYLAN

## WATER METERS

### KK-2

## Single jet Dry type Water Meter



#### GENERAL

- MID Certified
- Single jet design assures very high sensitivity even at low flows
- Suitable for potable water
- Electrostatic painted body made of corrosion resistant brass
- Protection against external magnetic fields
- Available for optical reading
- AMR reading features are optional
- 3 years of warranty • 360° rotating lid
- Wiper on the glass is optional • Vacuumed mechanism
- Suitable for cold water up to 50°C
- Almost no maintenance
- Service and spare parts available for 10 years
- IP68 Protected
- Environmental Classes

Climatic : -10°C/+55°C | Mechanic: M1/O | Elektromagnetic: E2

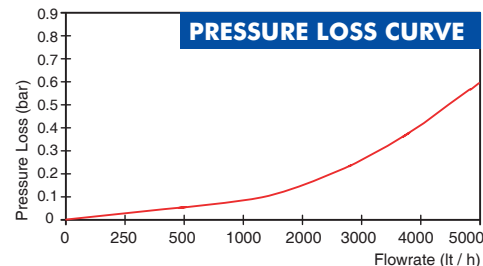
• Q2 ≤ Q ≤ Q4 Maximum Permissible Error

Class 2 Water Meters; %±2 (Water Temp. ≤ 30°C), %±3 (Water Temp. > 30°C)

Class 1 Water Meters; %±1 (Water Temp. ≤ 30°C), %±2 (Water Temp. > 30°C)

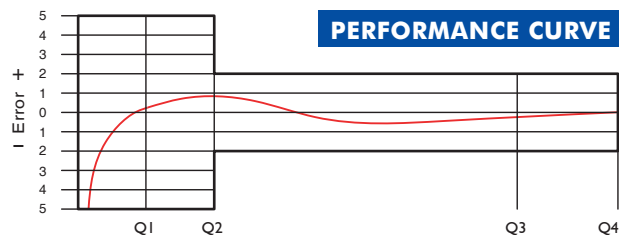
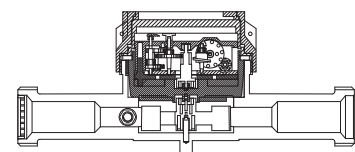
• Q1 ≤ Q < Q2 Maximum Permissible Error

Class 2 Water Meters; % ± 5 | Class 1 Water Meters; % ± 3



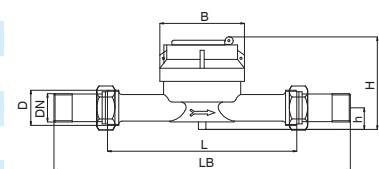
#### PERFORMANCE DATA

Nominal Diameter	DN	15				20			
Overload Flowrate	Q4	m³/h 3,125				3,125 5			
Permanent Flowrate	Q3	m³/h 2,5				2,5 4			
Transitional Flowrate	Q2	m³/h 0,020 0,050		0,020 0,050		0,0256 0,08			
Minimum Flowrate	Q1	m³/h 0,0125 0,03125		0,0125 0,03125		0,016 0,05			
Q3/Q1 (MI-001 OIML R49)	-	≤200 ≤80		≤200 ≤80		≤250 ≤80			
Mounting on the network	-	H V		H V		H V			
Length	L	110/115/130/145 165/170/190				110/115/130/165/190			
Maximum Registration Capacity	m³	9999 / 99999 / 99999,99 / 99999,999							
Initial Flow	Qi	l/h 7							
Maximum Working Pressure	bar	16							
Maximum Working Temperature	°C	50							
Pressure Loss Class	bar	0,63							
Smallest Reading Resolution	m³	0,00005							
Class	-	Class 1/Class 2							
Quantity per package	-	10							



#### DIMENSIONS

Nominal diameter	DN	15	15	15	20	20	mm
Connecting diameter	D	G 3/4	G 3/4	G 3/4	G 1	G 1	B
Total overall meter height	H	86,7	86,7	86,7	86,7	86,7	mm
Axis height	h	20,6	20,6	20,6	20,6	20,6	mm
Length	L	110 115	130 145	165 170 190	110 115 130	165 190	mm
Width	LB	190 195	210 225	245 250 270	190 195 210	245 270	mm
Length with connections	B	79	79	79	79	79	mm
Unit weight		0,80/0,86	0,82/0,88	0,84/0,90	0,88/0,94	0,90/0,96	kg
Package Weight (without connect)		8,90	9,30	9,60	9,76	9,86	kg
Package Weight (with connect)		10,50	10,90	11,20	11,56	11,76	kg
Package dimensions		21x43x17	21x43x17	24x47x23	21x43x17	24x47x23	cm



"Due to continuous development of our products, we reserve the right to modify our product design or construction without prior notice."