

# BAYLAN

## WATER METERS

# TK-1C

## Multi jet Dry type Water Meter



### GENERAL

- MID Certified • Impeller chamber strainer (Optional)
- Reading with reed sensor • 1 pulse output at 1/10/100 lt
- Suitable for potable water
- Low pressure loss, high sensitivity at initial flow
- Special glass with high resistance to pressure and impact
- Electrostatic painted body made of corrosion resistant brass
- Available for optical reading • 360° rotating lid
- Pulse output and AMR reading features are optional
- 3 years of warranty • Non return valve
- Suitable for cold water up to 50°C
- Stainless steel register cup is optional
- Almost no maintenance • Vacuumed mechanism
- Service and spare parts available for 10 years
- IP68 Protected
- Environmental Classes

Climatic : -10°C/+55°C | Mechanic: M1/O | Elektromagnetic: E2

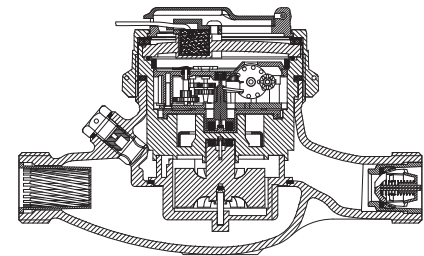
- $Q2 \leq Q \leq Q4$  Maximum Permissible Error

Class 2 Water Meters;  $\% \pm 2$  (Water Temp.  $\leq 30^\circ\text{C}$ ),  $\% \pm 3$  (Water Temp.  $> 30^\circ\text{C}$ )

Class 1 Water Meters;  $\% \pm 1$  (Water Temp.  $\leq 30^\circ\text{C}$ ),  $\% \pm 2$  (Water Temp.  $> 30^\circ\text{C}$ )

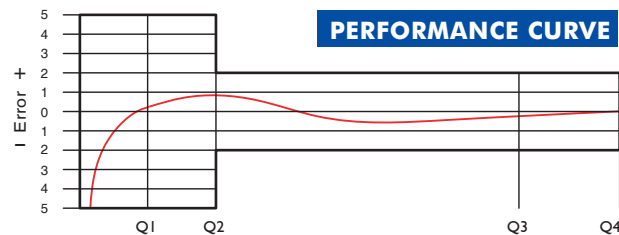
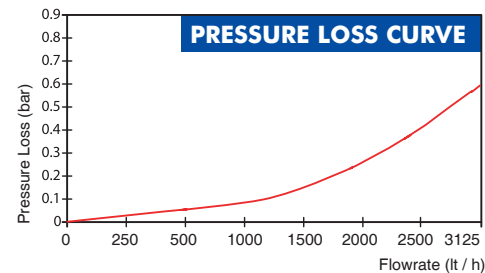
- $Q1 \leq Q < Q2$  Maximum Permissible Error

Class 2 Water Meters;  $\% \pm 5$  | Class 1 Water Meters;  $\% \pm 3$



### PERFORMANCE DATA

Nominal diameter	DN	15	20
Overload Flowrate	Q4	m <sup>3</sup> /h 3,125	3,125
Permanent Flowrate	Q3	m <sup>3</sup> /h 2,5	2,5
Transitional Flowrate	Q2	m <sup>3</sup> /h 0,02   0,1	0,02
Minimum Flowrate	Q1	m <sup>3</sup> /h 0,0125   0,0625	0,0125
Q3/Q1 (MI-001 OIML R49)		$\leq 200$   $\leq 40$	$\leq 200$
Mounting on the network		H   V	H
Maximum Registration Capacity		9999 / 99999 / 99999,99 / 99999,999	
Initial Flowrate	Qi	l/h 5	
Maximum Working Pressure	bar	16	
Maximum Working Temperature	°C	50	
Pressure Loss Class	bar	0,63	
Smallest Reading Resolution	m <sup>3</sup>	0,00005	
Class		Class 1 / Class 2	
Quantity per package		10	



### DIMENSIONS

Nominal diameter	DN	15	20	mm
Connecting diameter	D	G 3/4	G 1	B
Total overall meter height	H	109	109	mm
Axis height	h	31,5	31,5	mm
Length	L	190	190	mm
Width	B	97	97	mm
Length with connections	LB	270	270	mm
Unit weight		1,15	1,22	kg
Package Weight (without connect)		12,26	13,00	kg
Package Weight (with connect)		13,86	14,90	kg
Package dimensions		25x46x22	25x46x22	cm

