

BAYLAN

WATER METERS

TK-21

Multi jet Dry type Water Meter

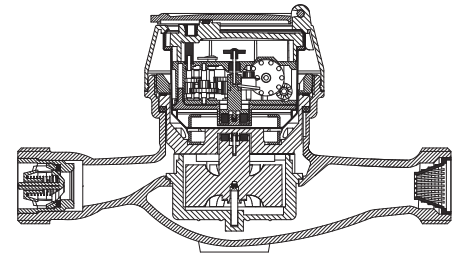


GENERAL

- MID Certified
- Multi jet working principle assures a long service time
- Suitable for potable water
- Low pressure loss, high sensitivity at initial flow
- Vacuumed mechanism • Protection against magnetic effects
- Electrostatic painted body made of corrosion resistant brass
- Protection against external magnetic fields
- Available for optical reading • Non return valve
- AMR reading features are optional
- 3 years of warranty • Almost no maintenance
- Stainless steel register cup is optional
- Suitable for cold water up to 50°C
- Service and spare parts available for 10 years
- IP68 Protected
- Environmental Classes

Climatic : -10°C/+55°C | Mechanic: M1/O | Elektromagnetic: E2

- Q2≤Q≤Q4 Maximum Permissible Error
- Class 2 Water Meters; %±2 (Water Temp.≤30°C), %±3 (Water Temp.>30°C)
- Class 1 Water Meters; %±1 (Water Temp.≤30°C), %±2 (Water Temp.>30°C)
- Q1≤Q<Q2 Maximum Permissible Error
- Class 2 Water Meters; % ± 5 | Class 1 Water Meters; % ± 3



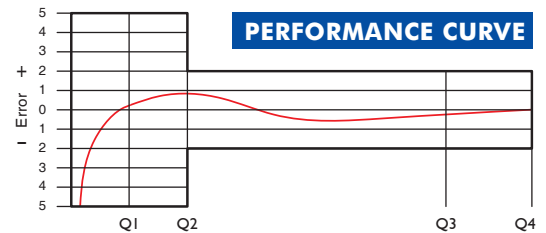
PERFORMANCE DATA

Overload Flowrate	Q4	m ³ /h	3,125
Permanent Flowrate	Q3	m ³ /h	2,5
Transitional Flowrate	Q2	m ³ /h	0,0200
Minimum Flowrate	Q1	m ³ /h	0,0125
Q3/Q1 (MI-001 OIML R49)	-		≤200
Mounting on the network	-		Horizontal
Initial Flow	Qi	l/h	5
Maximum Working Pressure	bar		16
Maximum Working Temperature	°C		50
Pressure Loss Class	bar		0,63
Maximum Registration Capacity	m ³		9999/99999/99999,99/99999,999
Smallest Reading Resolution	m ³ /h		0,00005
Class	-		Class 1 / Class 2
Quantity per package	-		10
Package dimensions	cm		24x47x23

DIMENSIONS

Nominal diameter	DN	20	mm
Connecting diameter	D	G 1	B
Total overall meter height	H	108,5	mm
Axis height	h	27	mm
Length	L	190	mm
Width	B	82	mm
Length with connections	LB	270	mm
Unit weight		1,05	kg
Package Weight (without connections)		11,31	kg
Package Weight (with connections)		13,21	kg

PERFORMANCE CURVE



PRESSURE LOSS CURVE

