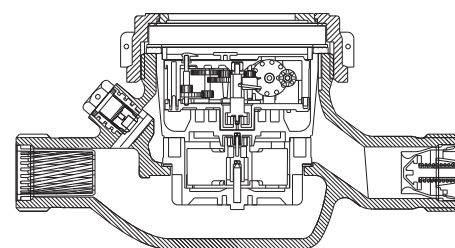


BAYLAN

WATER METERS

TK-2P

Multi jet Dry type Water Meter



GENERAL

- MID Certified
- Suitable for potable water
- Multi jet working principle assures a long service time
- Low pressure loss, high sensitivity at initial flow
- Vacuumed mechanism
- 360° rotating lid • Non return valve
- Composite body with high resistance to pressure and impacts
- Protection against external magnetic fields
- Available for optical reading
- Pulse output and AMR reading features are optional
- 3 years of warranty • Almost no maintenance
- Suitable for cold water up to 50°C
- Stainless steel register cup is optional
- Service and spare parts available for 10 years
- Brass or composite end connection options
- IP68 Protected
- Environmental Classes

Climatic : -10°C/+55°C | Mechanic: M1/O | Elektromagnetic: E2

- Q2 ≤ Q ≤ Q4 Maximum Permissible Error

Class 2 Water Meters; %±2 (Water Temp. ≤ 30°C), %±3 (Water Temp. > 30°C)

Class 1 Water Meters; %±1 (Water Temp. ≤ 30°C), %±2 (Water Temp. > 30°C)

- Q1 ≤ Q < Q2 Maximum Permissible Error

Class 2 Water Meters; % ± 5 | Class 1 Water Meters; % ± 3



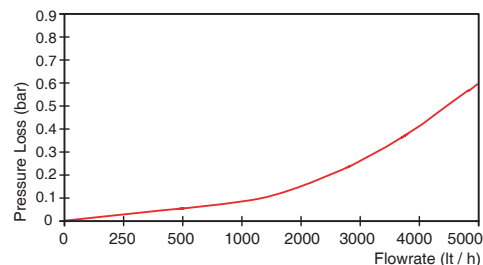
PERFORMANCE DATA

Overload Flowrate	Q4	m ³ /h	5
Permanent Flowrate	Q3	m ³ /h	4
Transitional Flowrate	Q2	m ³ /h	0,032
Minimum Flowrate	Q1	m ³ /h	0,02
Q3/Q1 (MI-001 OIML R49)			≤200
Mounting on the network			Horizontal
Maximum Registration Capacity			9999 / 99999 / 99999,99 / 99999,999
Initial Flowrate	Qi	l/h	6
Maximum Working Pressure		bar	16
Maximum Working Temperature		°C	50
Pressure Loss Class		bar	0,63
Smallest Reading Resolution		m ³	0,00005
Class			Class 1 / Class 2
Quantity per package			10

DIMENSIONS

Nominal diameter	DN	20	mm
Connecting diameter	D	G1	B
Total overall meter height	H	114	mm
Axis height	h	34	mm
Length	L	190	mm
Width	B	96	mm
Length with connections	LB	270	mm
Unit weight		0,73	kg
Package Weight (without connect)		8,10	kg
Package Weight (with connect)		9,05	kg
Package dimensions		27x52x22	cm

PRESSURE LOSS CURVE



PERFORMANCE CURVE

