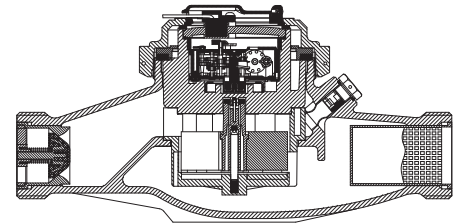


BAYLAN

WATER METERS

TK-5C

Multi jet Dry type Water Meter



GENERAL

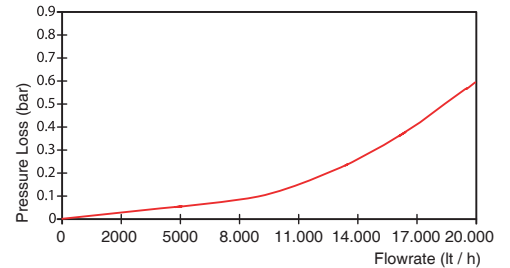
- MID Certified
 - Reading with reed sensor
 - 1 pulse output at 1/10/100 Lt
 - Stainless steel register cup is optional
 - Low pressure loss, high sensitivity at initial flow
 - Vacuumed mechanism • Suitable for potable water
 - Electrostatic painted body made of corrosion resistant brass
 - Available for optical reading
 - 3 years of warranty • Non return valve
 - Suitable for cold water up to 50°C
 - Almost no maintenance • 360° rotating lid
 - Service and spare parts available for 10 years
 - IP68 Protected
 - Environmental Classes
- Climatic : -10°C/+55°C | Mechanic: M1/O | Elektromagnetic: E2
- $Q2 \leq Q \leq Q4$ Maximum Permissible Error
- Class 2 Water Meters; $\% \pm 2$ (Water Temp. $\leq 30^\circ\text{C}$), $\% \pm 3$ (Water Temp. $> 30^\circ\text{C}$)
 Class 1 Water Meters; $\% \pm 1$ (Water Temp. $\leq 30^\circ\text{C}$), $\% \pm 2$ (Water Temp. $> 30^\circ\text{C}$)
- $Q1 \leq Q < Q2$ Maximum Permissible Error
- Class 2 Water Meters; $\% \pm 5$ | Class 1 Water Meters; $\% \pm 3$



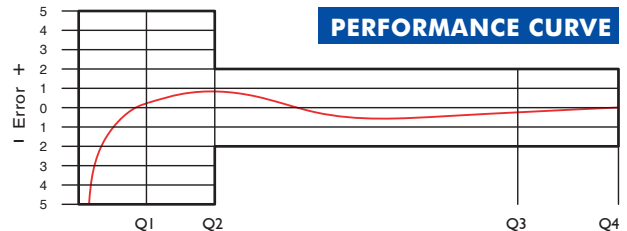
PERFORMANCE DATA

Overload Flowrate	Q4	m ³ /h	20
Permanent Flowrate	Q3	m ³ /h	16
Transitional Flowrate	Q2	m ³ /h	0,128
Minimum Flowrate	Q1	m ³ /h	0,08
Q3/Q1 (MI-001 OIML R49)			≤ 200
Mounting on the network			Horizontal
Maximum Registration Capacity			99999 / 99999,99 / 99999,999
Initial Flowrate	Qi	l/h	15
Maximum Working Pressure		bar	16
Maximum Working Temperature		°C	50
Pressure Loss Class		bar	0,63
Smallest Reading Resolution		m ³	0,00005
Class			Class 1 / Class 2
Quantity per package			4

PRESSURE LOSS CURVE



PERFORMANCE CURVE



DIMENSIONS

Nominal diameter	DN	40	mm
Connecting diameter	D	G 2	B
Total overall meter height	H	148	mm
Axis height	h	42	mm
Length	L	300	mm
Width	B	135	mm
Length with connections	LB	438	mm
Unit weight		4,18	kg
Package Weight (without connect)		18,05	kg
Package Weight (with connect)		22,00	kg
Package dimensions		34x37x36	cm

