

# BAYLAN

## WATER METERS

### TY-3

## Multi jet Wet type Water Meter



#### GENERAL

- MID Certified
- Multi jet working principle assures a long service time
- Available for optical reading
- Electrostatic painted body made of corrosion resistant brass
- Pulse output and AMR reading features are optional
- Suitable for potable water
- Low pressure loss, high sensitivity at initial flow
- Non return valve
- Special glass with high resistance to pressure and impact
- 360° rotating lid
- Suitable for cold water up to 50°C
- Almost no maintenance • 3 years of warranty
- Service and spare parts available for 10 years
- Environmental Classes

Climatic : -10°C/+55°C | Mechanic: M1/O | Elektromagnetic: E2

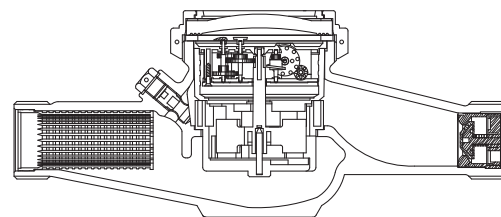
- Q2 ≤ Q ≤ Q4 Maximum Permissible Error

Class 2 Water Meters; %±2 (Water Temp. ≤ 30°C), %±3 (Water Temp. > 30°C)

Class 1 Water Meters; %±1 (Water Temp. ≤ 30°C), %±2 (Water Temp. > 30°C)

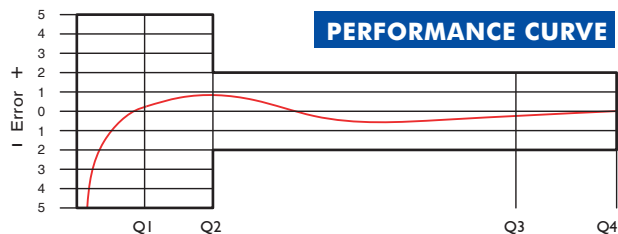
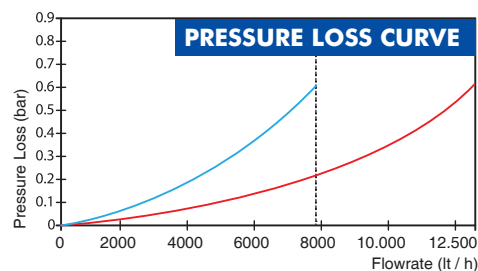
- Q1 ≤ Q < Q2 Maximum Permissible Error

Class 2 Water Meters; % ± 5 | Class 1 Water Meters; % ± 3



#### PERFORMANCE DATA

Overload Flowrate	Q4	m <sup>3</sup> /h	7,875		12,5	
Permanent Flowrate	Q3	m <sup>3</sup> /h	6,3		10	
Transitional Flowrate	Q2	m <sup>3</sup> /h	0,0504	0,126	0,01	0,254
Minimum Flowrate	Q1	m <sup>3</sup> /h	0,0315	0,07875	0,0625	0,159
Q3/Q1 (MI-001 OIML R49)	-		≤200	≤80	≤160	≤63
Mounting on the network	-	H	V	H	V	
Maximum Registration Capacity	m <sup>3</sup>	9999 / 99999 / 99999,99 / 99999,999				
Maximum Working Pressure	bar	16				
Maximum Working Temperature	°C	50				
Pressure Loss Class	bar	0,63				
Initial Flow	Qi	l/h	15			
Smallest Reading Resolution	m <sup>3</sup>	0,00005				
Class	-	Class 1/Class 2				
Unit weight	kg	2,10				
Package Weight (without connect)	kg	22,19				
Package Weight (with connect)	kg	26,59				
Quantity per package	-	10				
Package dimensions	cm	26,5x52x30,5				



#### DIMENSIONS

Nominal diameter	DN	25	
Connecting diameter	D	G1 1/4	B
Total overall meter height	H	125,8	mm
Axis height	h	42,5	mm
Width	B	93	mm
Length	L	260	mm
Length with connections	LB	380	mm

